



Technical Precautions for Design, Installation and Maintenance

34) Connection Diagrams for Motorized Pulleys

Model 138E - 400L in 3 phase Power Cord 0.13 HP - 5.5 HP

Model 138E in 1 phase Power Cord 0.13 HP - 0.75 HP

Power cord wires are supplied with black insulation and white numbers. Wire numbers are indicated on the diagram.

T1 & T2 = Internal bi-metallic thermal protection switch which **MUST BE CONNECTED** to external normally closed control circuit.

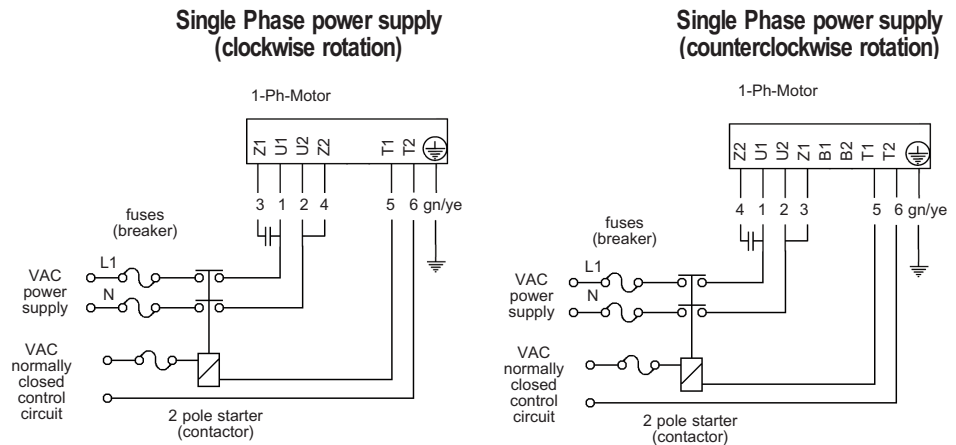
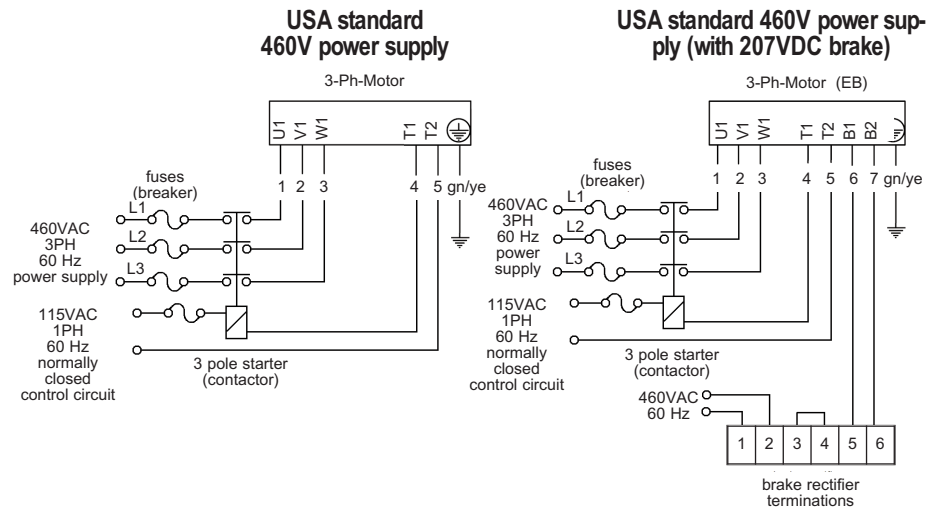
EB = electromagnetic brake

See Technical Precautions pages 78 - 88 for complete electrical design, installation, and maintenance instructions.

Brake rectifier is shown with jumper across terminals 3 and 4. This enables AC power supply to rectifier to stop and start brake. Brake responsiveness may be improved by connecting an external switch to terminals 3 and 4.

For two speed motor details contact Rulmecca.

Internal electromagnetic brake is available in models 138E - 500M.





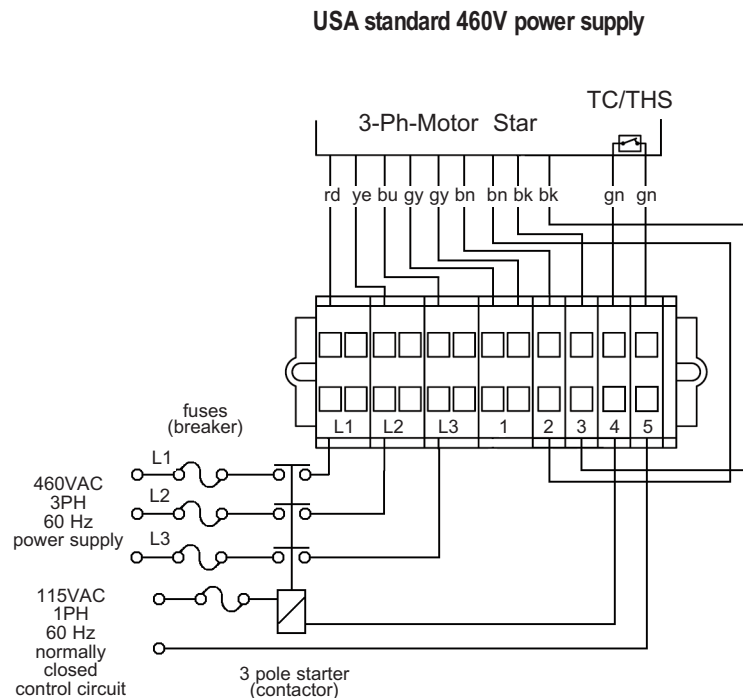
Technical Precautions for Design, Installation and Maintenance

34) Connection Diagrams for Motorized Pulleys

Model 138E in 3 phase Compact Terminal Box and WAGO-Clamp 0.13 HP - 1.0 HP

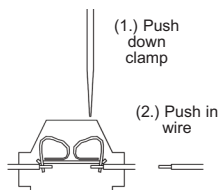
T1 & T2 = Internal bi-metallic thermal protection switch which **MUST BE CONNECTED** to external normally closed control circuit.

See Technical Precautions pages 78 - 88 for complete electrical design, installation, and maintenance instructions.

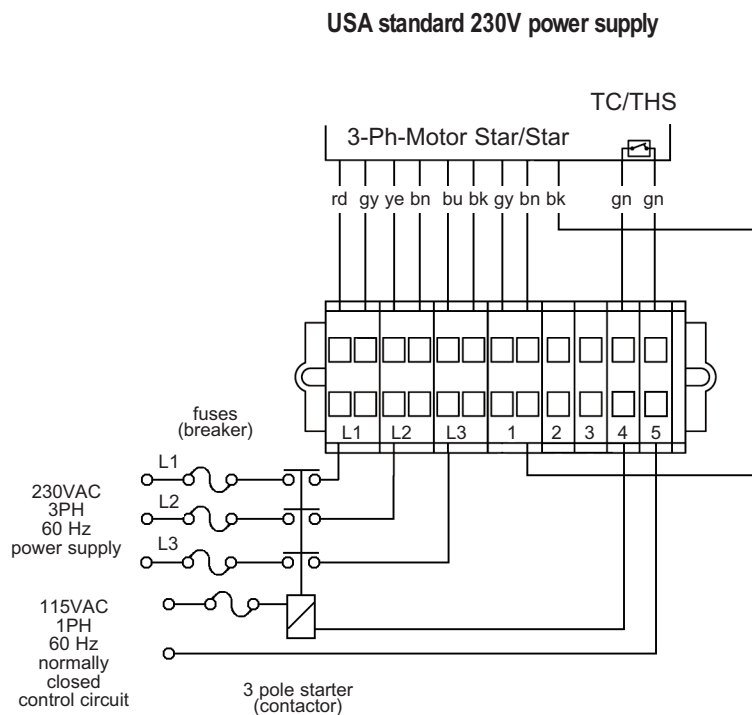


For two speed motor details contact Rulmecca.

RD = Red
YE = Yellow
BK = Black
GY = Grey
BU = Blue
GN = Green
BN = Brown
T1 & T2 = Thermal Protector



Assembly instructions





Technical Precautions for Design, Installation and Maintenance

34) Connection Diagrams for Motorized Pulleys

Model 138E in 1 phase Compact Terminal Box and WAGO-Clamp 0.13 HP - 0.75 HP

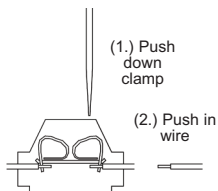
Diagrams are valid for Motorized Pulleys manufactured after January 2011. For units built prior to this date contact Rulmecca or refer to Repair and Maintenance Guide available at www.rulmecacorp.com.

T1 & T2 = Internal bi-metallic thermal protection switch which **MUST BE CONNECTED** to external normally closed control circuit.

See Technical Precautions pages 78 - 88 for complete electrical design, installation, and maintenance instructions.

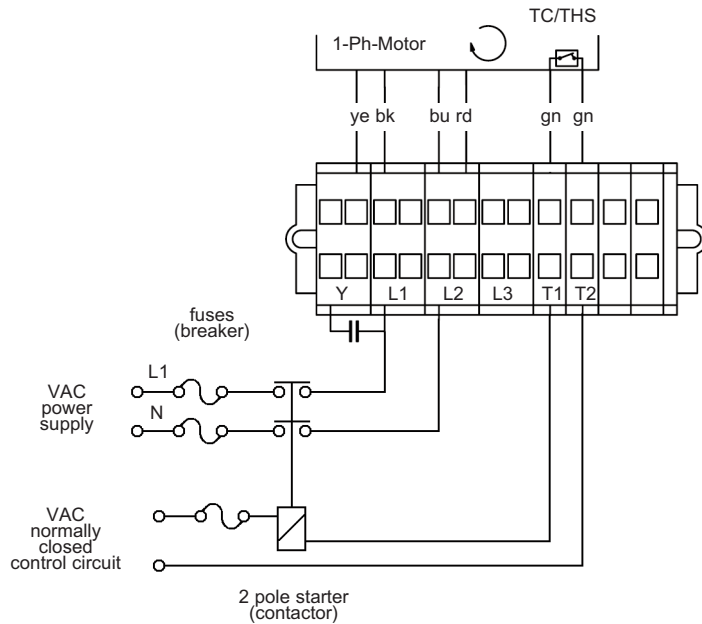
For two speed motor details contact Rulmecca.

RD = Red
YE = Yellow
BK = Black
GY = Grey
BU = Blue
GN = Green
BN = Brown
T1 & T2 = Thermal Protector



Assembly instructions

Single Phase power supply (clockwise rotation)



Single Phase power supply (counterclockwise rotation)

